

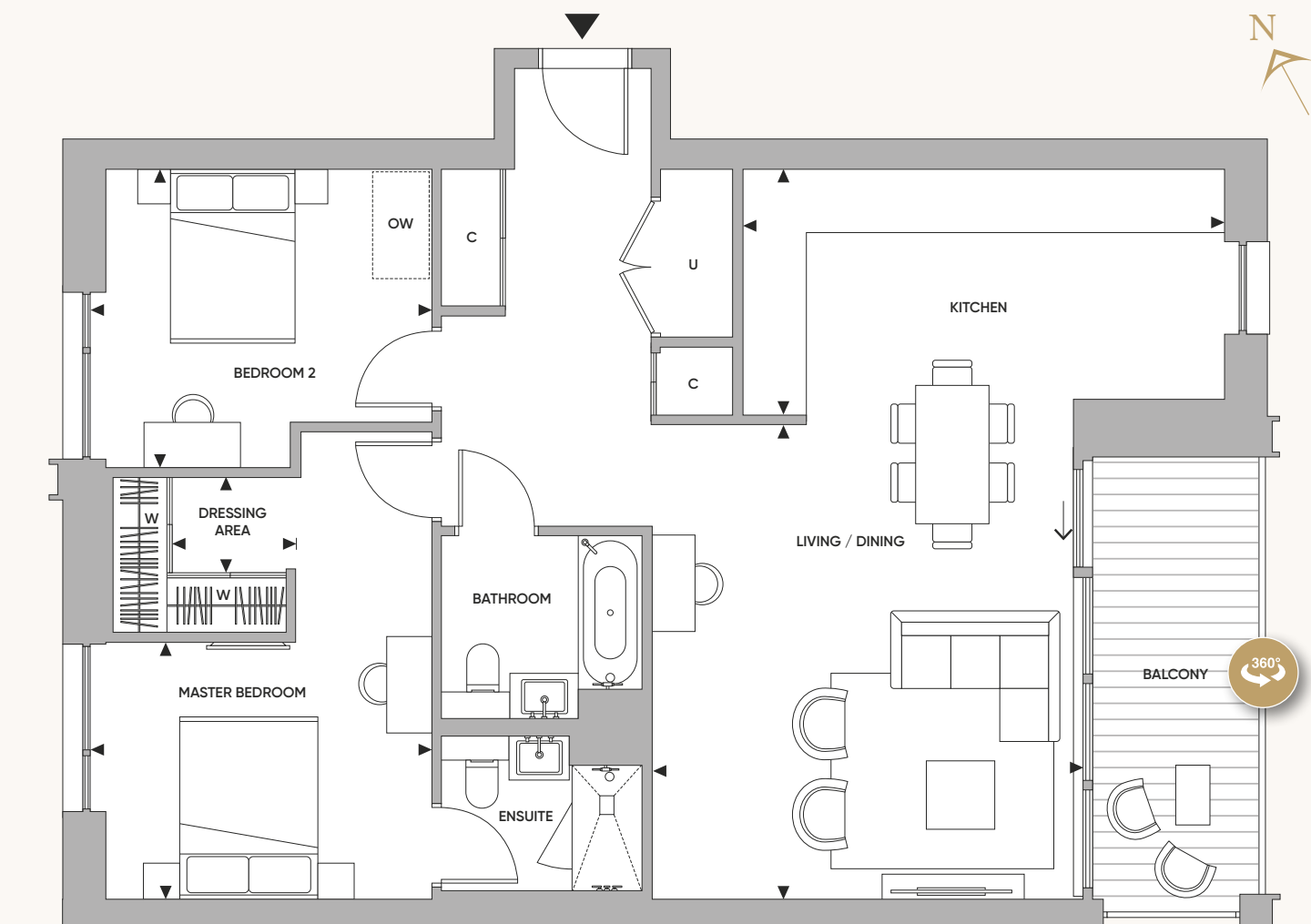
The Beaumont

2 bedroom apartment

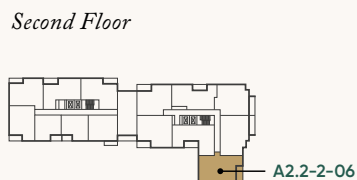
APARTMENT: A2.2-2-06

TOTAL AREA 90.6 SQ.M 975 SQ.FT

KING'S
ROAD
PARK
LONDON SW 6



Second Floor



ROOM DIMENSIONS

Living / Dining	4.72m x 5.20m	15' 6" x 17' 1"
Kitchen	5.29m x 2.70m	17' 4" x 8' 10"
Master Bedroom	3.74m x 2.82m	12' 3" x 9' 3"
Dressing Area	1.35m x 1.05m	4' 5" x 3' 5"
Bedroom 2	3.74m x 3.27m	12' 3" x 10' 9"
Balcony	9.1 sq m	98 sq ft

KEY

◄► Measurement Points C Cupboard U Utility Cupboard
W Wardrobe OW Optional Wardrobe



St William
Designed for life

Floorplans shown for King's Road Park are for approximate measurements only. Exact layouts and sizes may vary. All measurements may vary within a tolerance of 5%. The dimensions are not intended to be used for carpet sizes, appliance sizes or items of furniture. Floorplans have been sized to fit the page, as a result this plan may not be at the same scale as plans in other inserts. Apartment styles may vary within a set colour palette, please ask the sales representative for more detail. To discuss the location of the boiler please speak to your Customer Relations Manager. King's Road Park is a marketing name and will not necessarily form part of the approved postal address. Applicants are advised to contact St William to ascertain the availability of any particular property.