

TYRIAN

Tyros - 305

PRICE ON APPLICATION

Type	Bedrooms	Bathrooms
Apartment	3	3+1
Interior	Terrace	Total
212,52m ²	70,54m ²	283,06m ²



PRESTIGE
EXPO

BZH

Built Area

Living Area	212,52m ²
Terrace	70,54m ²
Total	283,06m ²
Built Area Common Area	307,57m ²

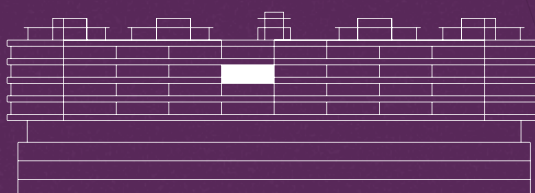
Usable Area

Living Area	190,80m ²
Terrace	56,40m ²
Total	247,20m ²

Usable area according to Decree BOJA 218/2005

Living Area	190,80m ²
According to decree	209,88m ²

*All dimensions are approximate and will depend on the final layout of the construction.



3 BEDROOM	DATE:	SEPTEMBER 2024
APARTMENT	SCALE:	1/100 (A2)
PROPERTY:		ARCHITECT:
DEI HOMES SL.		MOISÉS GARCÍA GONZÁLEZ

Usable Area

Living Room + Kitchen	60,50m²
Master Bedroom	52,50m²
Bedroom 1	27,00m²
Bedroom 2	25,60m²
Terrace 1	47,50m²
Terrace 2	8,90m²

*All dimensions are approximate and will depend on the final layout of the construction.

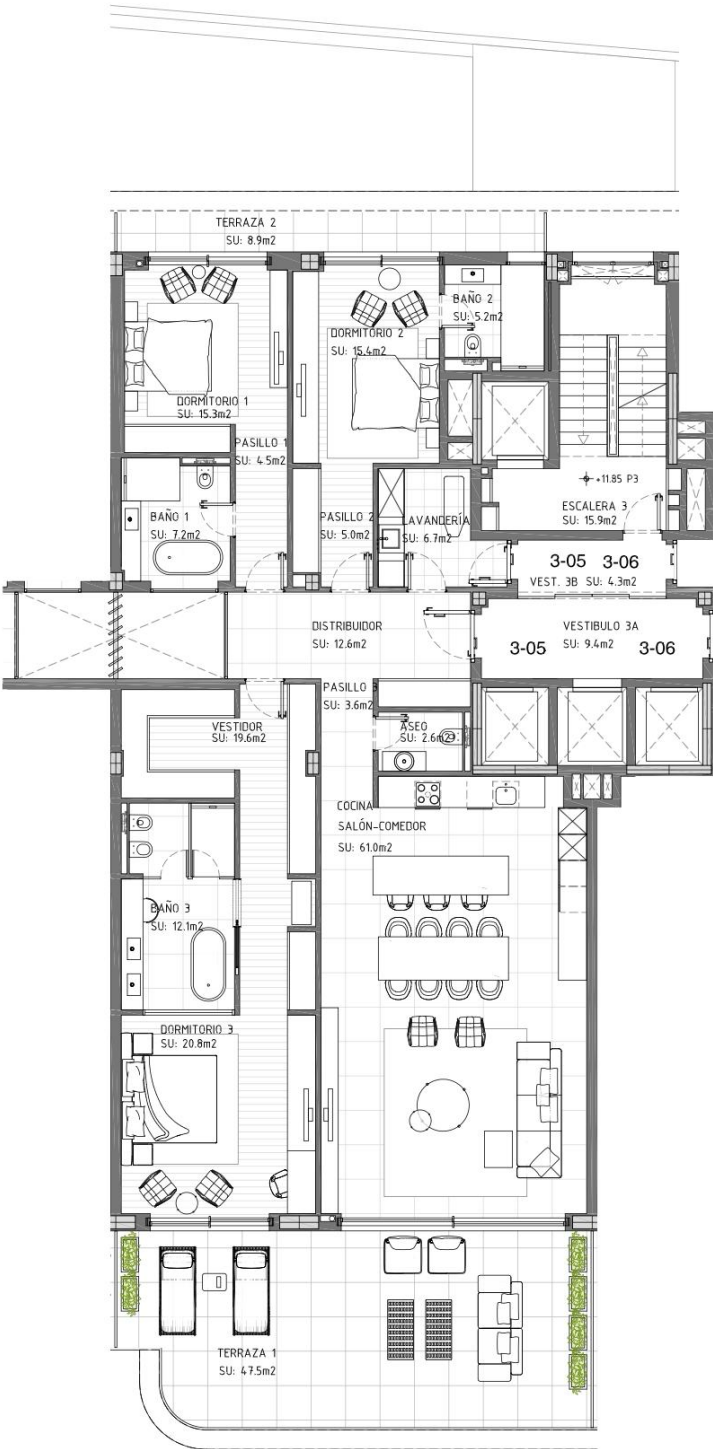
FLOOR 3



*Indicative plan, not legally binding.

*This document is for informational purposes and may undergo changes due to technical requirements of the project. All furniture, including kitchen furnishings, is for reference only. The door swings and the layout of sanitary fixtures are not binding. The indicated surface areas are approximate and may be subject to modifications for technical reasons during the execution of the works. The surface areas listed below have been calculated in accordance with Decree 218/2005 on consumer information regarding the sale and rental of homes in Andalusia.

[QUALITY MEMORY LINK](#)

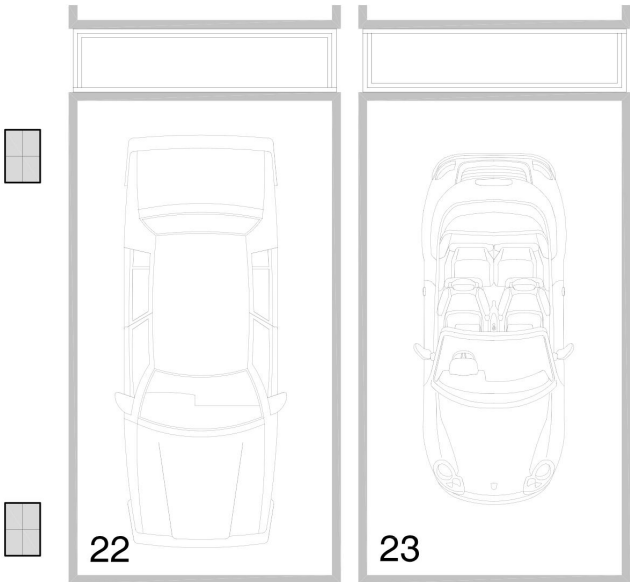


3 BEDROOM DATE: SEPTEMBER 2024
APARTMENT SCALE: 1/100 (A2)

PROPERTY: ARCHITECT:
DEI HOMES SL. MOISÉS GARCÍA GONZÁLEZ

Usable Area

Parking 43,83m²



Garage Basement Floor -3



*This document is for informational purposes and may undergo changes due to technical requirements of the project. All furniture, including kitchen furnishings, is for reference only. The door swings and the layout of sanitary fixtures are not binding. The indicated surface areas are approximate and may be subject to modifications for technical reasons during the execution of the works. The surface areas listed below have been calculated in accordance with Decree 218/2005 on consumer information regarding the sale and rental of homes in Andalusia.

[QUALITY MEMORY LINK](#)