

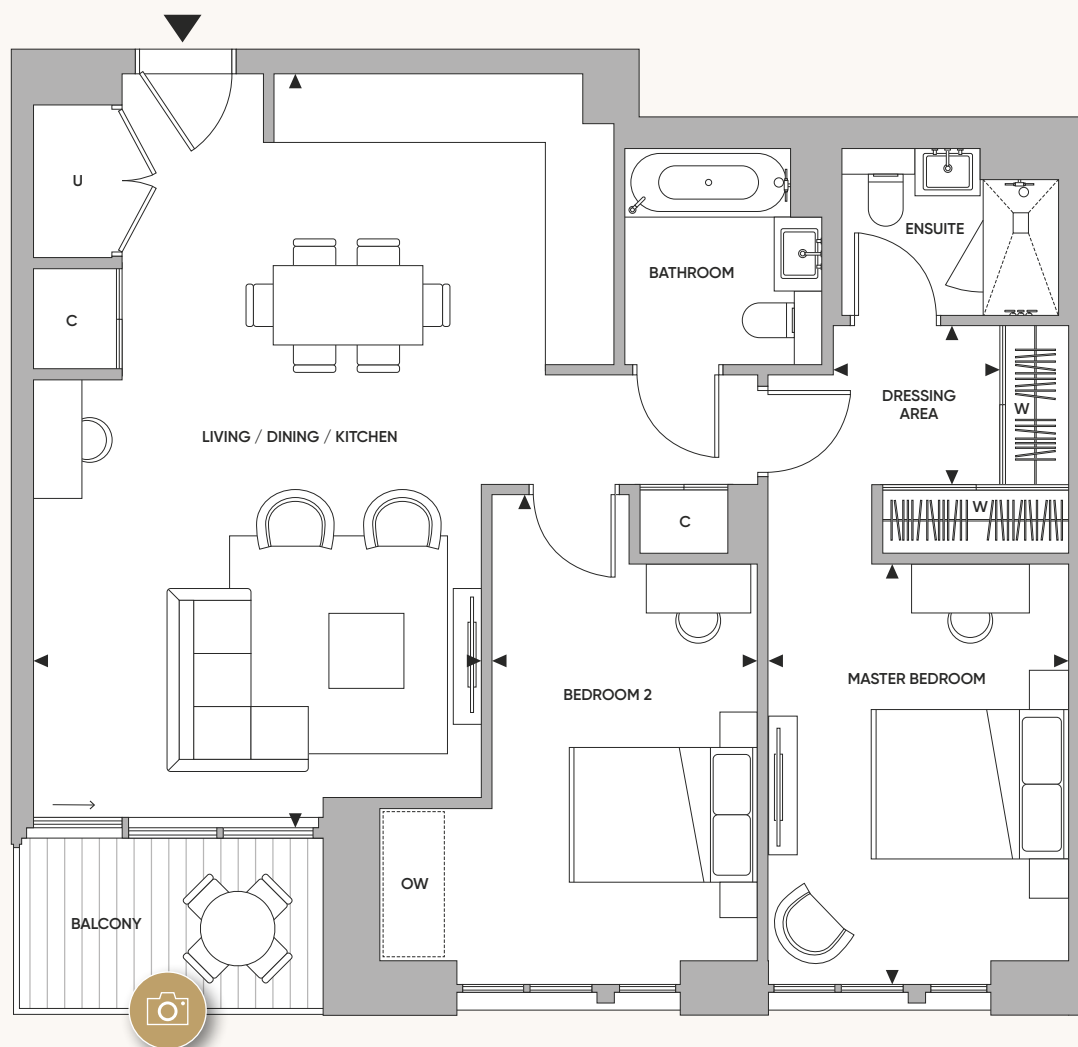
# The Wren

## 2 bedroom apartment

APARTMENT: A1.2-0-02

TOTAL AREA 86.7 SQ.M 933 SQ.FT

KING'S  
ROAD  
PARK  
LONDON SW 6



Ground Floor



### ROOM DIMENSIONS

Living / Dining / Kitchen	7.64m x 4.54m	25' 1" x 14' 11"
Master Bedroom	3.05m x 4.25m	10' 0" x 13' 11"
Dressing Area	1.70m x 1.61m	5' 7" x 5' 3"
Bedroom 2	2.70m x 4.95m	8' 10" x 16' 3"
Balcony	5.3 sq m	57 sq ft

### KEY

◀▶ Measurement Points C Cupboard OW Optional Wardrobe  
W Wardrobe U Utility Cupboard



St William  
Designed for life

Floorplans shown for King's Road Park are for approximate measurements only. Exact layouts and sizes may vary. All measurements may vary within a tolerance of 5%. The dimensions are not intended to be used for carpet sizes, appliance sizes or items of furniture. Floorplans have been sized to fit the page, as a result this plan may not be at the same scale as plans in other inserts. Apartment styles may vary within a set colour palette, please ask the sales representative for more detail. To discuss the location of the boiler please speak to your Customer Relations Manager. King's Road Park is a marketing name and will not necessarily form part of the approved postal address. Applicants are advised to contact St William to ascertain the availability of any particular property.